

The background is a collage of four black and white photographs. Top-left: A train with the number 7398 on its side, with palm trees and hills in the background. Top-right: An industrial facility with several tall smokestacks emitting plumes of smoke. Bottom-left: An aerial view of a large industrial or port area with various buildings and structures. Bottom-right: A large outdoor storage yard filled with many rows of shipping containers.

# Cleaning the Air in the Most Impacted Communities

**Update on community  
identification and prioritization**

*Assembly Bill (AB) 617, a new opportunity*



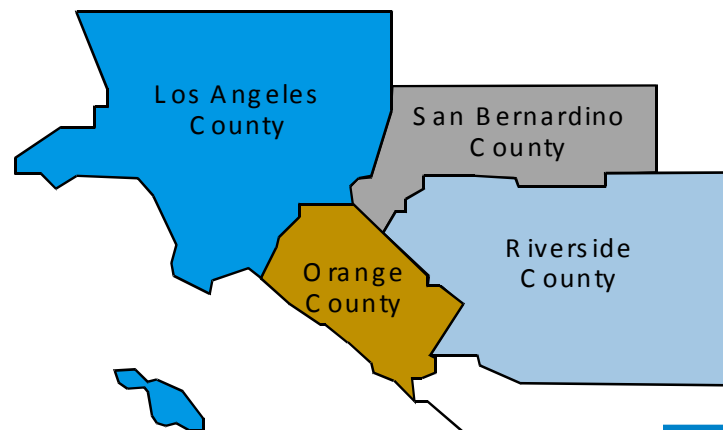


# Who is the SCAQMD?

**Regional Government Agency Responsible for Protecting Our Residents from the Health Effects of Air Pollution**

What we do

- Develop **Air Quality Management Plan**
- Adopt air quality **rules and regulations**
- Issue **permits**
- Conduct **periodic inspections and respond** to air quality complaints
- Develop and deploy **clean technology**
- Conduct **air monitoring**
- **Engage** with all stakeholders
- **Public outreach and education**





# Key Types of Air Pollution





# Key elements of AB 617

**Community  
Air  
Monitoring**

**Community  
Emission  
Reduction  
Plans**

**Easier  
Access to  
Emissions  
Data**

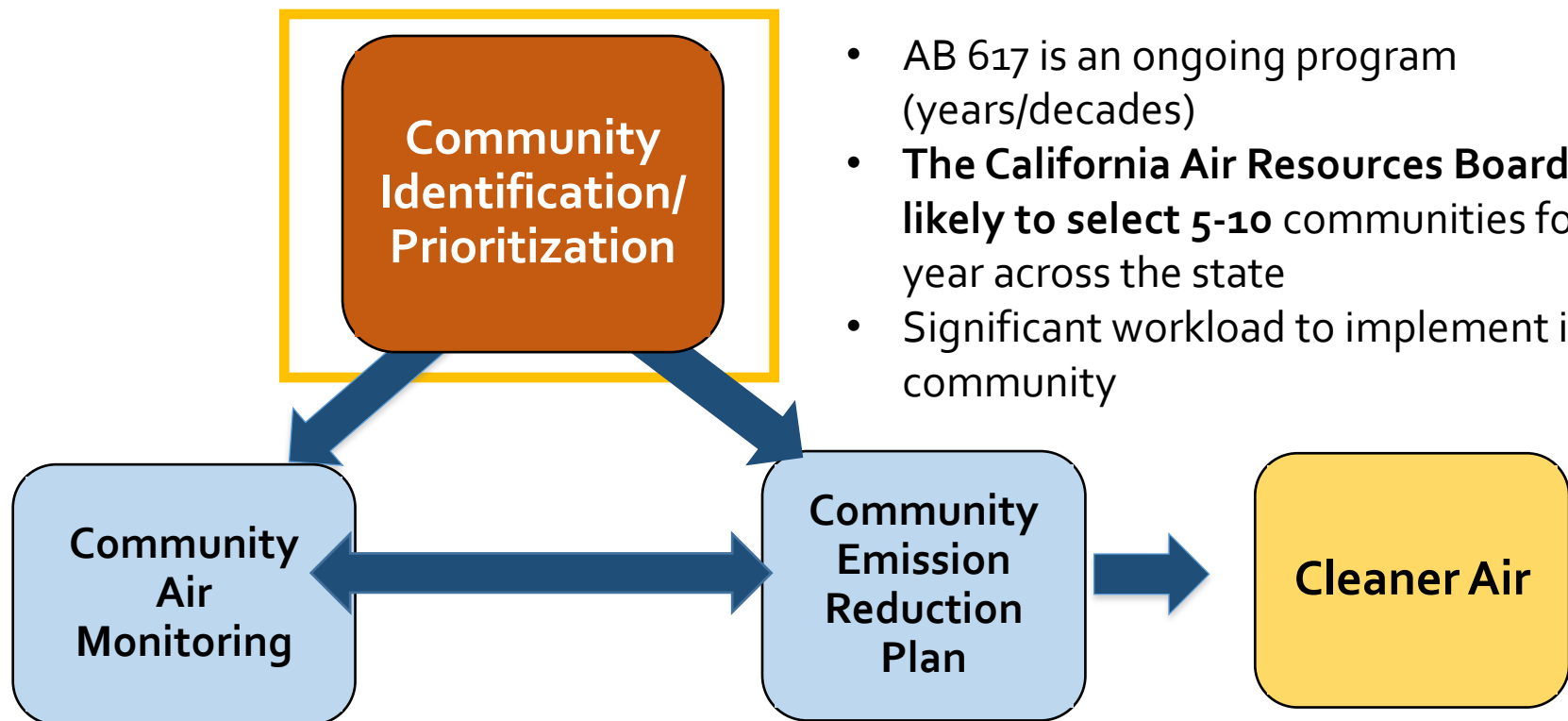
**Community  
centered**

**Best  
Emission  
Controls**

**Clean  
Technology  
Investments**



# Community Identification & Prioritization for AB 617



- AB 617 is an ongoing program (years/decades)
- **The California Air Resources Board (CARB) likely to select 5-10 communities for 1<sup>st</sup> year across the state**
- Significant workload to implement in each community

# Guiding Principles

- Prioritize disadvantaged communities that are disproportionately affected by air pollution.
- Utilize appropriate existing data and tools, especially those that have gone through the public process.
- Thoughtfully consider and integrate public input.
- Prioritize communities with known local sources of air pollution where Community Plans would have significant and additional positive impacts.
- Work toward promoting health equity by prioritizing most heavily burdened and disadvantaged communities.



# Outline of the process

1. **Feb-May 2018:** SCAQMD staff conducted community meetings to seek input on criteria for community identification
2. **Feb-May 2018:** SCAQMD staff received community nominations from community members and organizations (148 nominations from 21 communities)
3. **Apr-May 2018:** SCAQMD staff provided reports to the California Air Resources Board (CARB), with a list of communities under consideration
4. **May-Jun 2018:** SCAQMD staff conducting community meetings to seek input on criteria for community prioritization
5. **July 2018:** SCAQMD provides report to CARB with recommendations on implementation schedule



# Key input received to date

## Air pollution sources

Diesel sources  
(freeways, trucks,  
warehouses,  
railyards)

Oil production &  
processing (wells,  
refineries)

Landfills, scrap  
yards, hazardous  
waste sites

## Proximity/land use factors

Schools near  
air pollution  
sources/  
industrial  
areas

Concentration of  
industries

Green spaces

## Population factors

Population  
density

Low income

Communities of  
color

Access to  
healthcare

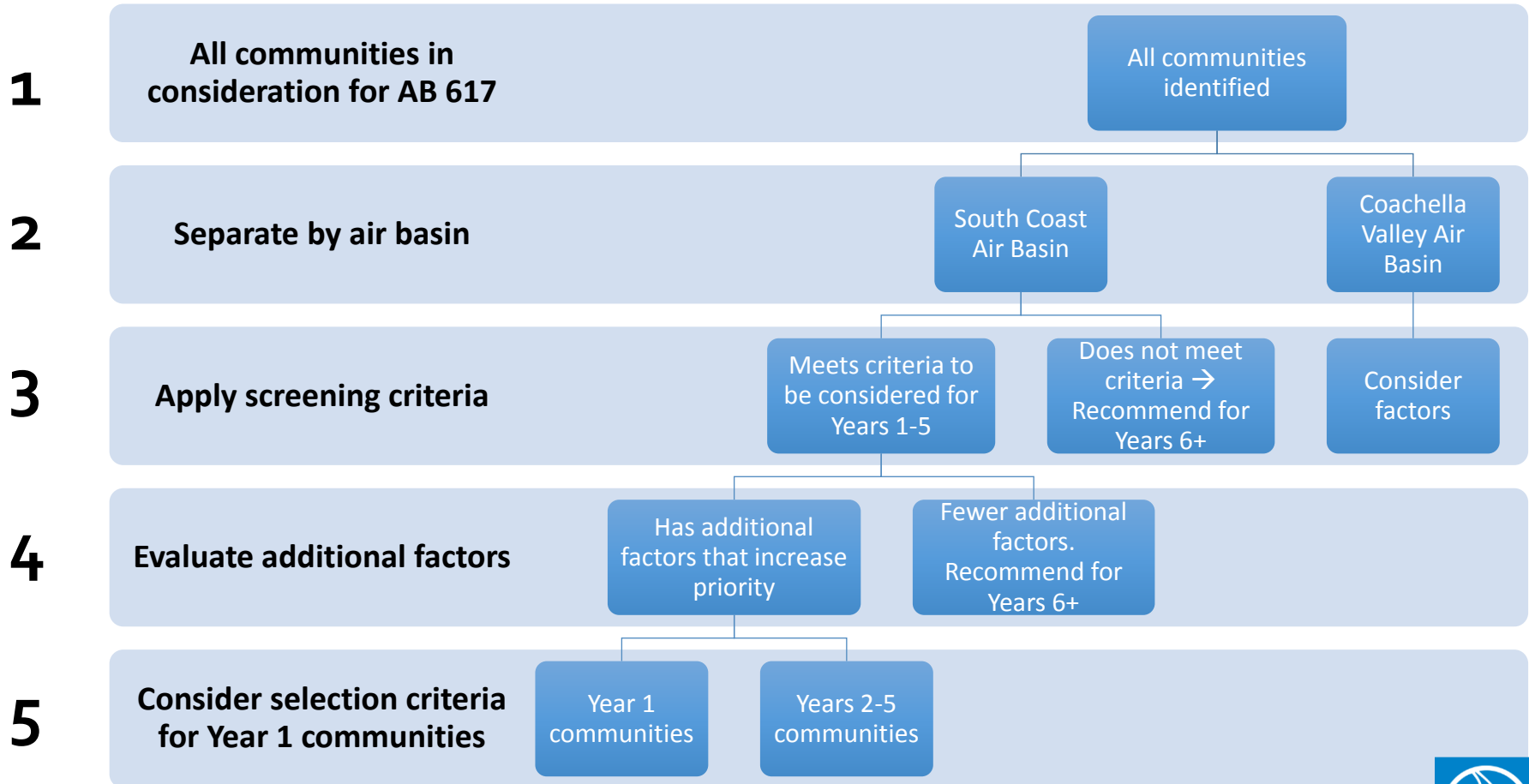
Asthma, cancer  
rates

Education levels

Children & elderly



# Summary Methods and Criteria for Community Prioritization



# STEP 1: ALL COMMUNITIES UNDER CONSIDERATION FOR AB 617

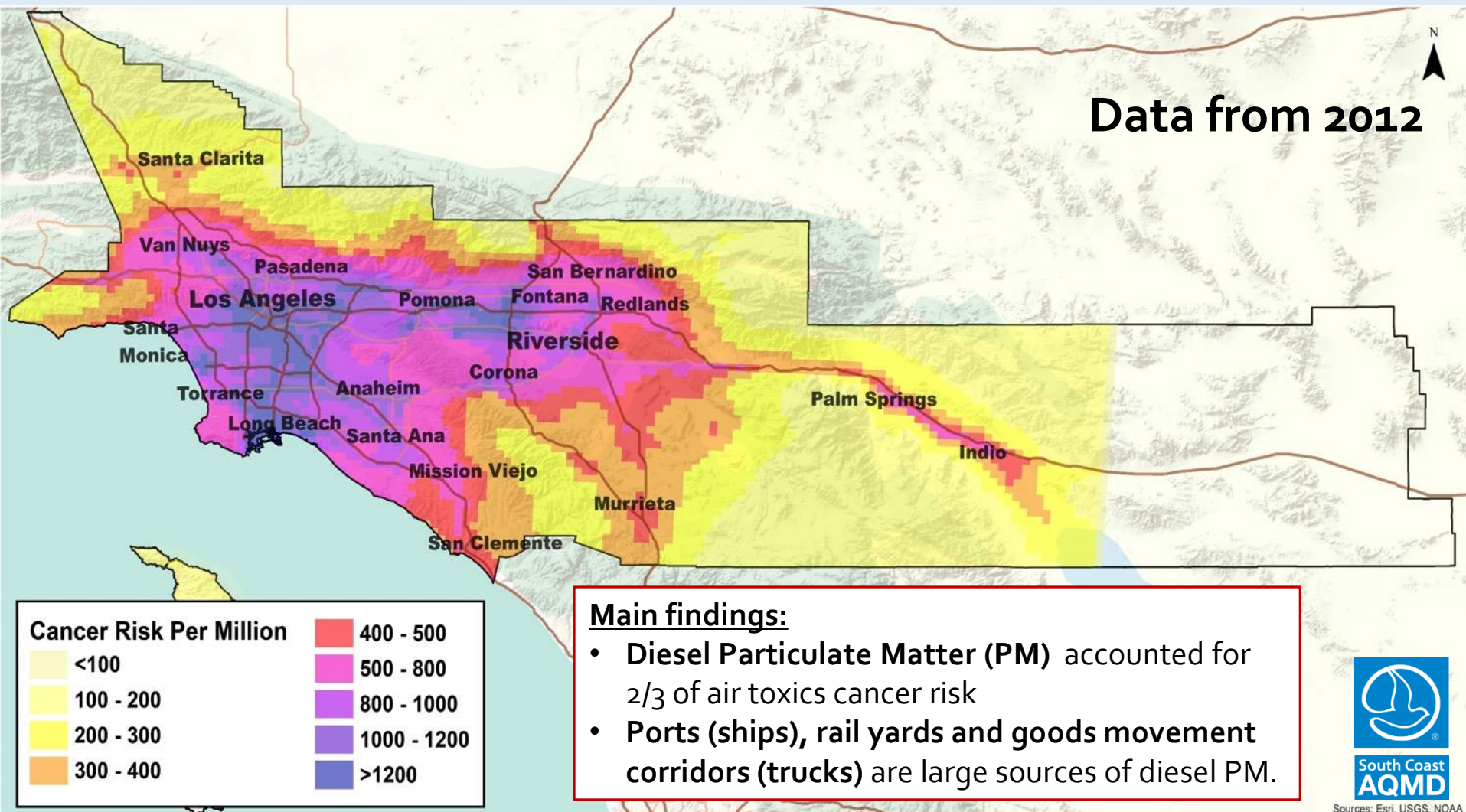
We first **identified communities** using a broadly inclusive approach.

Preliminary list includes each of the following:

- (1) **Top 25%** of MATES IV air toxics cancer risk
- (2) **Top 25%** of CalEnviroScreen 3.0 score
- (3) Community nominations (148 nominations received through 5/17/2018)
- (4) Communities with the highest density of schools within 1,000 feet of industrial land use



# Multiple Air Toxics Exposure Study (MATES IV)



# CalEnviroScreen 3.0 (OEHHA)

## Pollution Burden

### Exposures



Ozone



PM2.5



Diesel PM



Pesticide Use



Traffic



Drinking Water  
Contaminants



Toxic Releases  
from Facilities

### Environmental Effects



Solid Waste Sites  
and Facilities



Cleanup Sites



Groundwater  
Threats



Impaired Water  
Bodies



Hazardous Waste  
Generators and Facilities

## Population Characteristics

### Sensitive Populations



Asthma



Cardiovascular Disease



Low Birth-Weight Infants

### Social and Economic Factors



Poverty



Unemployment



Educational  
Attainment



Linguistic  
Isolation

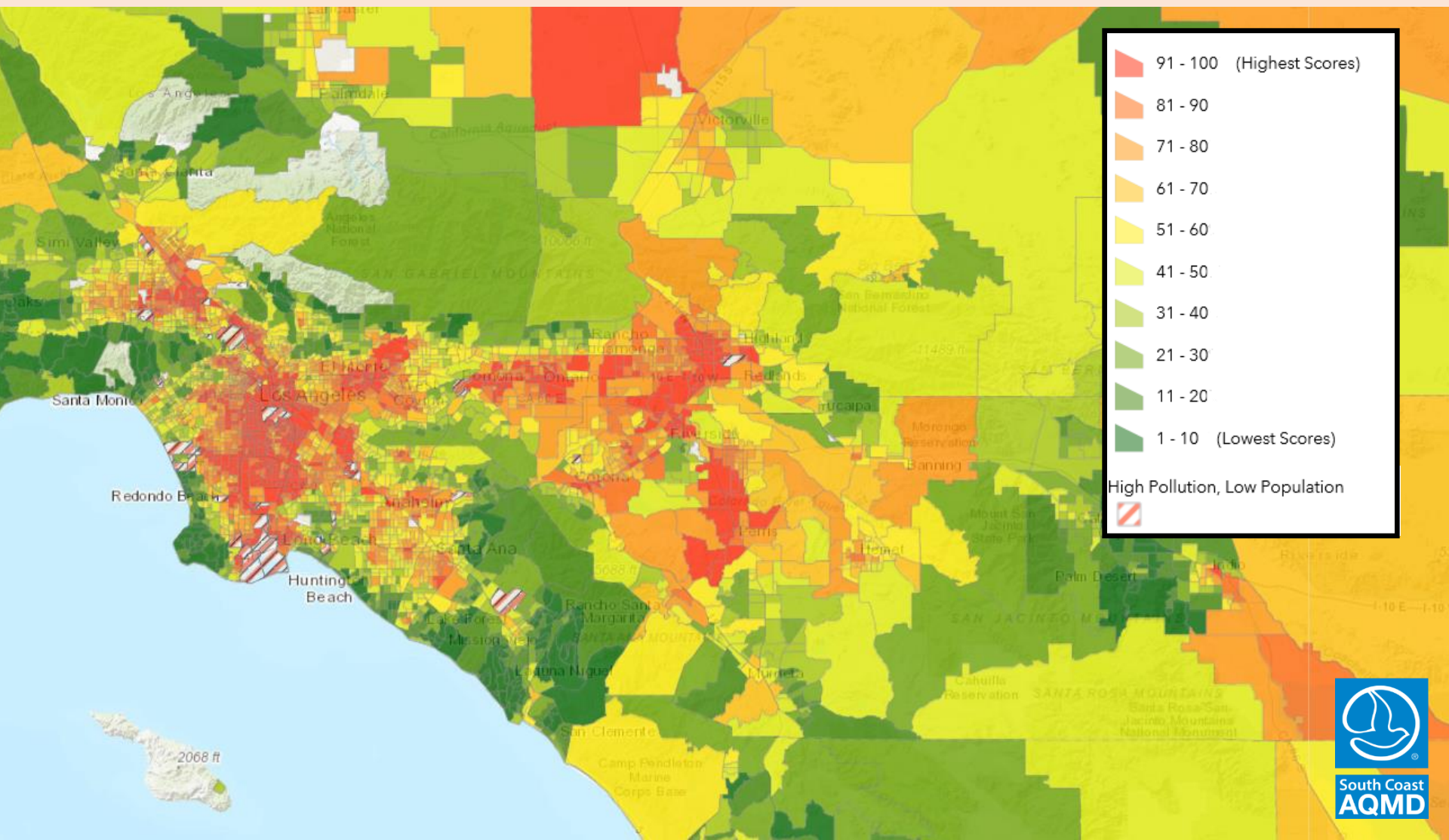


Housing Burdened  
Low Income Households

**OEHHA:**  
Office of  
Environmental  
Health Hazard  
Assessment  
(State agency)



# CalEnviroScreen 3.0 (OEHHA)



# Preliminary List of Communities Under Consideration

## (Alphabetical order, 55 communities)

### LOS ANGELES COUNTY

- Azusa / Duarte / Monrovia / Arcadia / North 605
- Bell / Bell Gardens / Cudahy
- Canoga Park / Northridge / Reseda / Van Nuys / Panorama City / Winnetka / Tarzana
- Commerce / Maywood / Vernon
- Compton / Rancho Dominguez / Willowbrook / Lynwood
- Culver City (East) / Palms (East)
- Downey / Bellflower / Lakewood (North) / Cerritos (North)
- Downtown Los Angeles
- East Los Angeles / Boyle Heights
- El Monte / South El Monte / Avocado Heights / Hacienda Heights / West La Puente
- Gardena / Alondra Park / Lawndale
- Glendale (Central & South) / Burbank
- Hollywood / Los Feliz / Atwater Village / Echo Park / Silver Lake
- Inglewood / Hawthorne / Westmont / Vermont
- La Puente / Covina / West Covina / Baldwin Park
- Long Beach (East)
- LAX / Lennox / El Segundo
- Montebello
- Pacoima / North Hollywood / Sun Valley / Fernando / Sylmar
- Paramount / Long Beach (North)

- Pasadena near I-210
- Porter Ranch
- San Gabriel / Rosemead / Monterey Park / Alhambra (South)
- San Pedro / West Carson / Harbor City (East)
- Santa Fe Springs / Norwalk / West Whittier / Los Nietos / Pico Rivera
- South Gate / Huntington Park / Florence – Firestone / Walnut Park
- South Los Angeles / South East Los Angeles / Hyde Park
- Torrance
- Westlake / Korea Town / Midcity / Mid-Wilshire
- Wilmington / Long Beach (West) / Carson

### ORANGE COUNTY

- Anaheim / Fullerton / Orange

**CARB likely to select  
5 to 10 communities  
statewide for year 1**

### RIVERSIDE COUNTY

- Beaumont
- Corona / Temescal Valley
- Indio / Eastern Coachella Valley
- Hemet / San Jacinto
- Lake Elsinore
- Mira Loma / Jurupa Valley / Eastvale / Pedley
- Moreno Valley
- Perris / Nuevo
- Riverside (Central & East) / Rubidoux
- Riverside (West)

### SAN BERNARDINO COUNTY

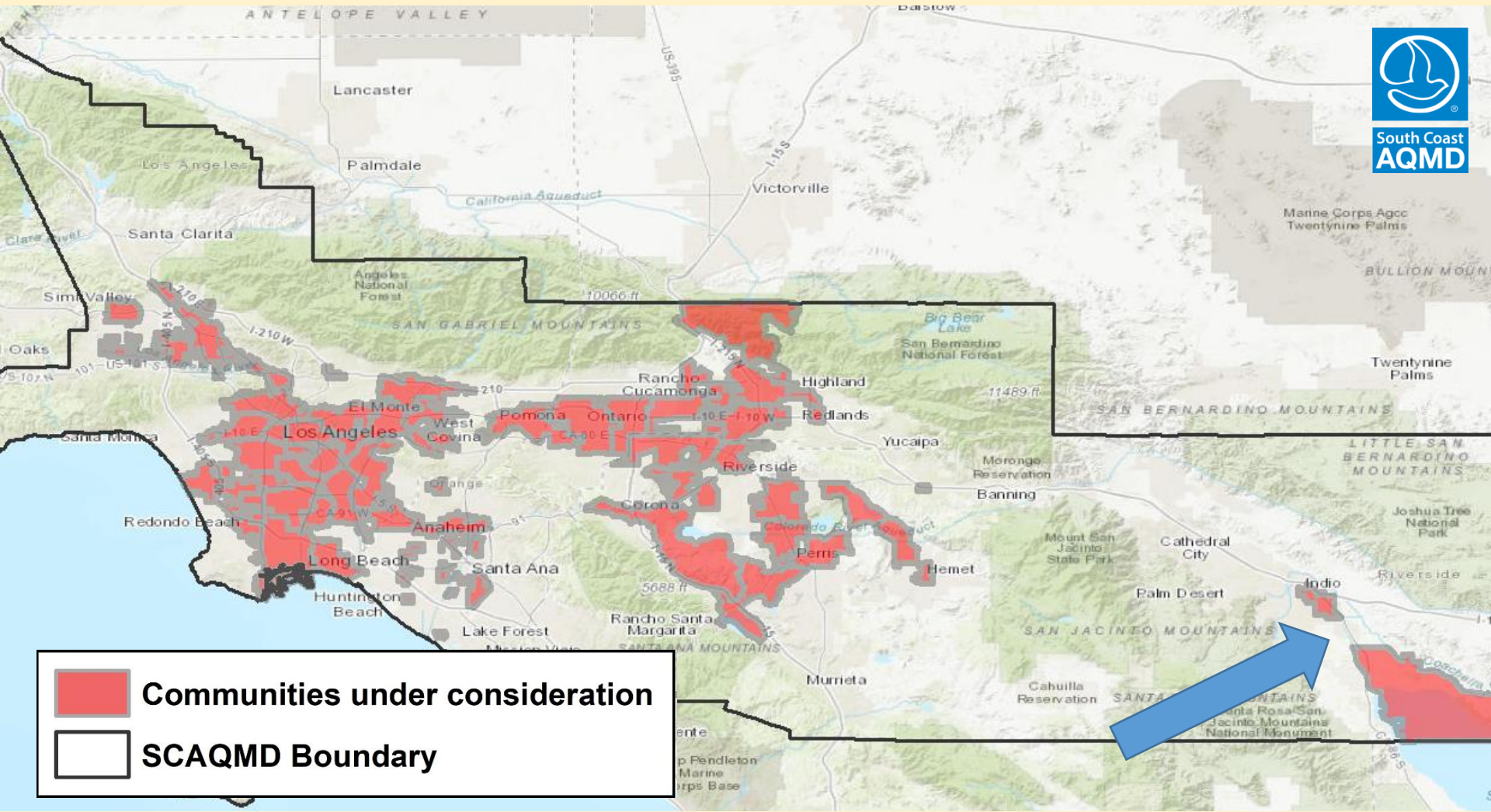
- Bloomington / Fontana / Rialto
- Colton / Grand Terrace / San Bernardino (Southwest)
- Highland / Crestline
- Rancho Cucamonga / Ontario (East)
- Redlands / Loma Linda
- San Bernardino / Muscoy

### CROSS COUNTY

- Cerritos / Buena Park / Artesia / La Mirada / Hawaiian Gardens
- Ontario (West) / Montclair / Upland / Claremont (South)
- Pomona / Chino / Walnut (East) / San Dimas (South)

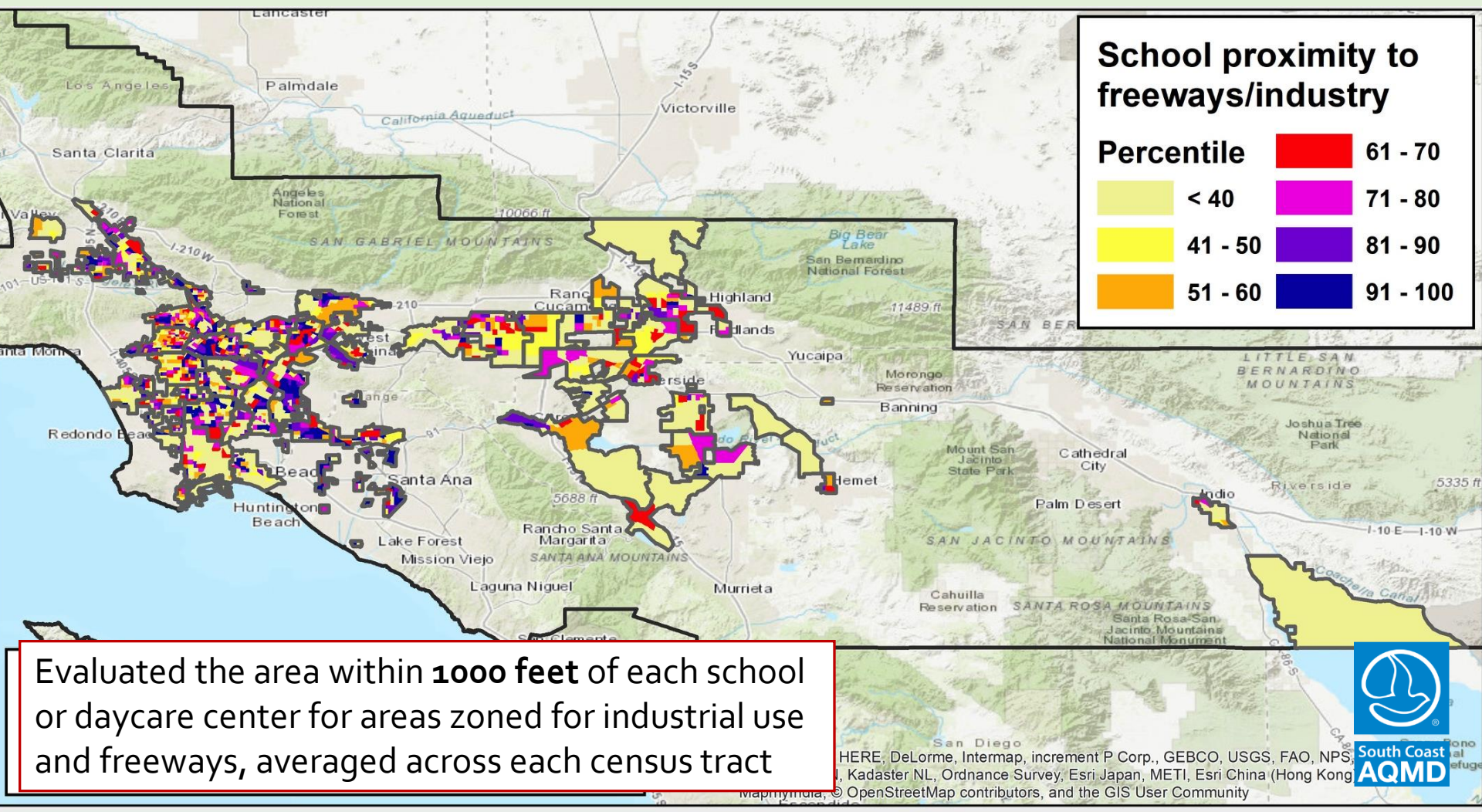


# Map of communities under consideration for AB 617





# Schools near industrial areas and freeways





## STEP 2: SEPARATE BY AIR BASIN

## STEP 3: APPLY SCREENING CRITERIA

### South Coast Air Basin

CalEnviroScreen score in Top 5%, AND  
MATES IV air toxics cancer risk in Top 50%

### Coachella Valley Air Basin

Consider existing data and current efforts in  
recommending implementation schedule

## STEP 4: EVALUATE ADDITIONAL FACTORS



Communities with **many schools** near industrial areas or freeways



Past or current air monitoring

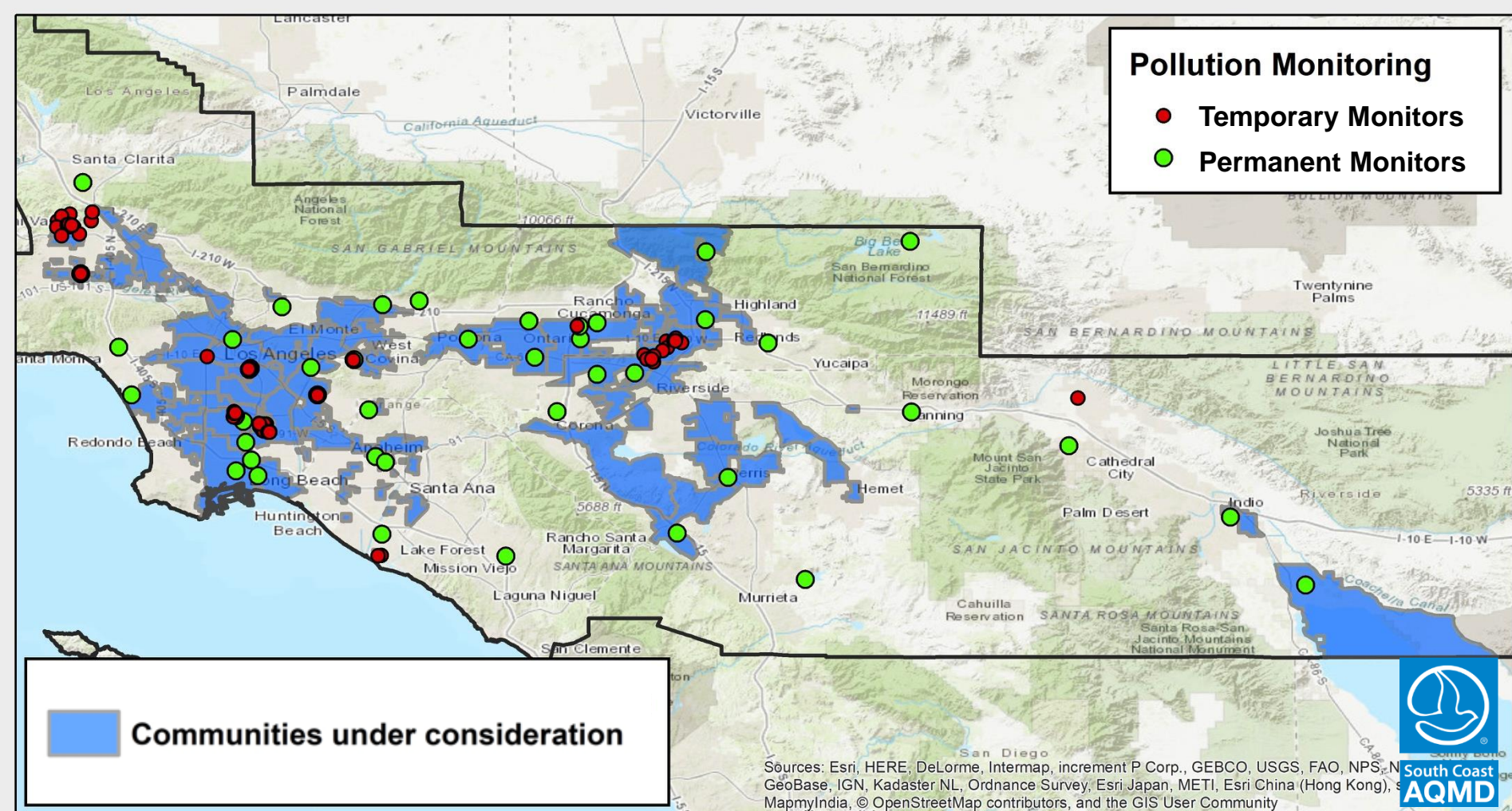


Past or current community plans or programs



Broad-based community support  
(e.g. self-nominations)

# Past & Current Air Monitoring Conducted by SCAQMD



# STEP 5: CONSIDER SELECTION CRITERIA FOR YEAR 1 COMMUNITIES

Given the short time frames and uncertain resources, staff is recommending communities for Year 1 that have a “head start”.



Communities where existing or past community air monitoring or community plans pave the way for rapid AB 617 plan implementation



Consider geographic diversity and diverse air pollution issues



Resources from local agencies and organizations that would contribute to the rapid implementation of this program



# Recommendations and reasoning for Year 1 communities

Community	Reasoning
Wilmington, West Long Beach, Carson	Build upon MATES V monitoring efforts
East LA, Boyle Heights	
San Bernardino, Muscoy	
South Gate / Huntington Park / Florence – Firestone / Walnut Park *	Industrial area proximity and MATES V monitoring

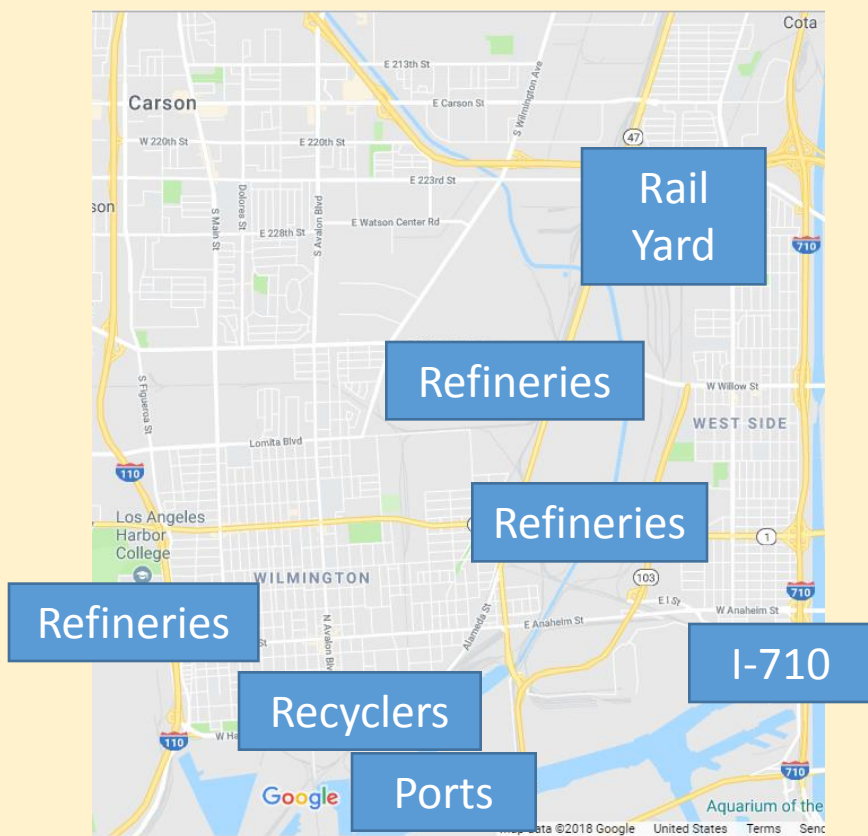
\*As funding resources allow

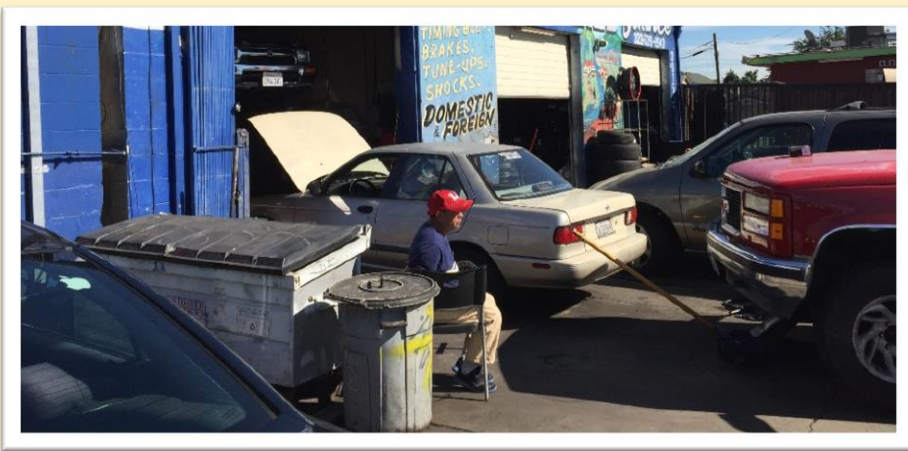




# Wilmington, West Long Beach, Carson

- Ports area communities, with several major refineries
- Socioeconomic burdens
- Previous and future air monitoring:
- **MATES IV**: 100<sup>th</sup> percentile
- **CalEnviroScreen 3.0**: 98.8<sup>th</sup> percentile





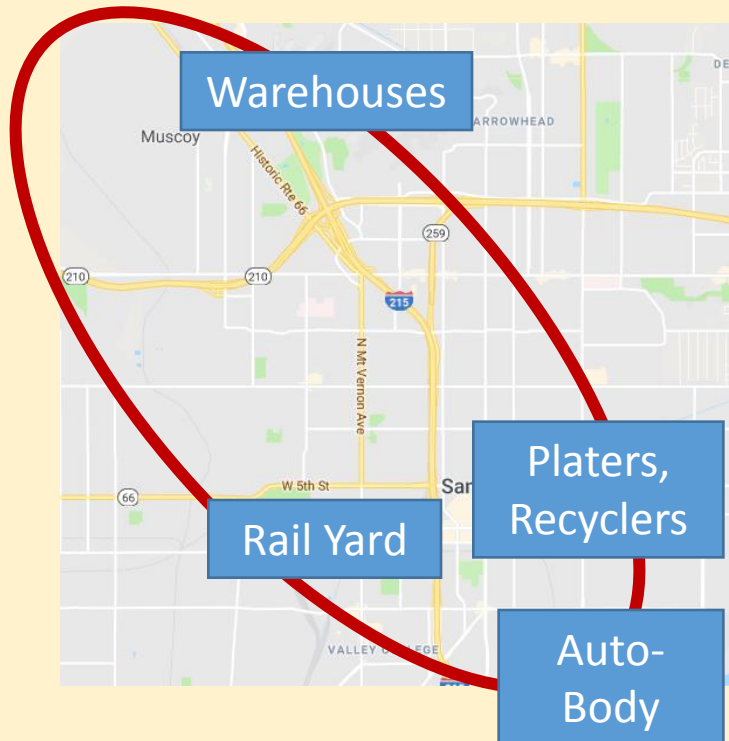
# East Los Angeles, Boyle Heights



- East LA communities, near freeways, rail yard, and major industrial areas
- Socioeconomic burdens
- Clean Communities Plan
- Previous air toxics monitoring
- **MATES IV:** 99.4<sup>th</sup> percentile
- **CalEnviroScreen 3.0:** 99.9<sup>th</sup> percentile



# San Bernardino, Muscoy



- Inland Empire community, with a major rail yard, and other industrial sources
- Socioeconomic burdens
- Clean Communities Plan
- MATES IV local-scale monitoring
- Geographical diversity, and diversity of sources
- **MATES IV:** 51.3<sup>th</sup> percentile
- **CalEnviroScreen 3.0:** 99.7<sup>th</sup> percentile



# South Gate / Huntington Park / Florence – Firestone / Walnut Park\*



- Alameda Corridor communities with major industrial areas near homes and schools
- SCAQMD participated in LA County Public Health's Community Risk Reduction Initiative
- **MATES IV:** 98.3<sup>th</sup> percentile
- **CalEnviroScreen 3.0:** 99.7<sup>th</sup> percentile
- **School proximity score** in highest category

\*As funding resources allow

# Continuing efforts in Paramount and Compton

- SCAQMD has already done substantial work in Paramount and Compton
- Recommendation:
  - Investigations into new sources is needed to inform future air monitoring and community emission reduction plans (CERPs)
  - Consider these as AB 617 communities for Years 2-5 or 2-6, as investigations progress

# Communities in consideration for Years 2-5 or 2-6 (initial recommendation)

14 communities, alphabetical by county

## LOS ANGELES COUNTY

- Bell / Bell Gardens / Cudahy
- Commerce / Maywood / Vernon
- Compton / Rancho Dominguez / Willowbrook / Lynwood
- Pacoima / North Hollywood / Sun Valley / San Fernando / Sylmar
- Paramount / Long Beach (North)
- South Los Angeles / South East Los Angeles / Hyde Park
- Torrance

## RIVERSIDE COUNTY

- Corona / Temescal Valley
- Indio / Eastern Coachella Valley
- Mira Loma / Jurupa Valley / Eastvale / Pedley
- Riverside (Central & East) / Rubidoux

## SAN BERNARDINO COUNTY

- Bloomington / Fontana / Rialto
- Colton / Grand Terrace / San Bernardino (Southwest)
- Rancho Cucamonga / Ontario (East)

# Future steps

Jun

- SCAQMD receives public input on community prioritization criteria and incorporates the comments

July

- SCAQMD Board considers list of communities and prioritization
- SCAQMD provides report to CARB with recommendations on implementation schedule

Sept

- CARB Board considers statewide AB617 strategy



# Community tool: Story map

Includes:

- Background on AB 617
- MATES IV data
- CalEnviroScreen 3.0 data

Visit: [www.aqmd.gov/ab617](http://www.aqmd.gov/ab617)

## AB 617 Community Screening Tool - For Discussion Purposes

SCAQMD



1 Using available information to guide AB 617 efforts

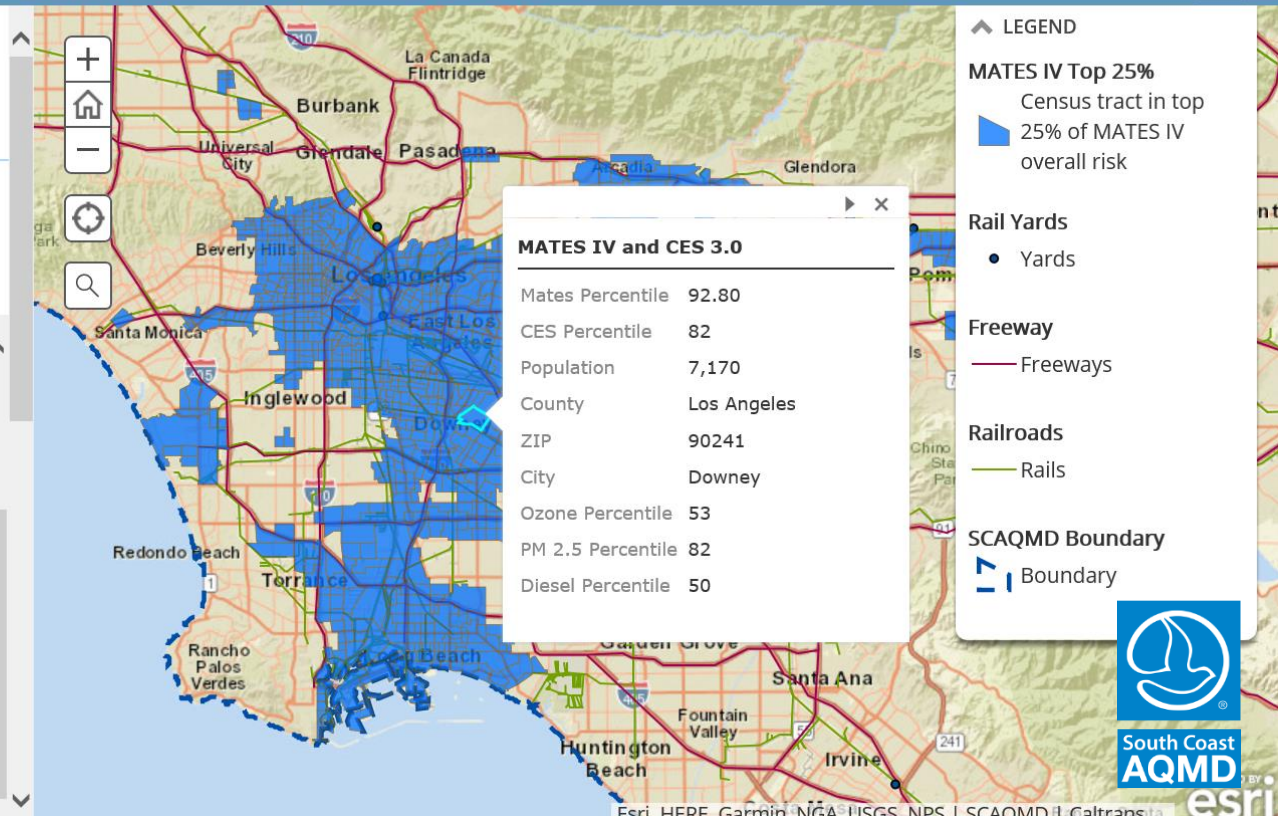
2 MATES IV Top 25% (76th to 100th Percentile)

In this map, the blue areas represent the top 25% of the air toxics cancer risk in the Basin.

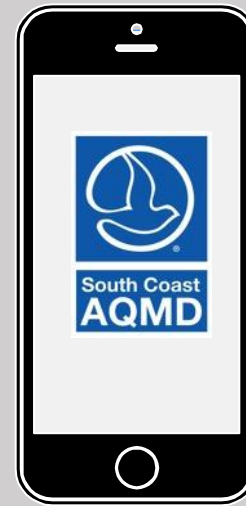
### How is this calculated?

This percentage is calculated according to the air toxics cancer risk attributed to each census tract when compared to other census tracts in the jurisdiction. When we say a census tract is within the top 25% we mean that the cancer risk of that census tract due to air toxics is higher than the remaining 75% of the census tracts.

Visit [SCAQMD's MATES IV website](http://www.scaqmd.gov/mates-iv) for more information on the study.



# Stay connected



@SouthCoastAQMD

